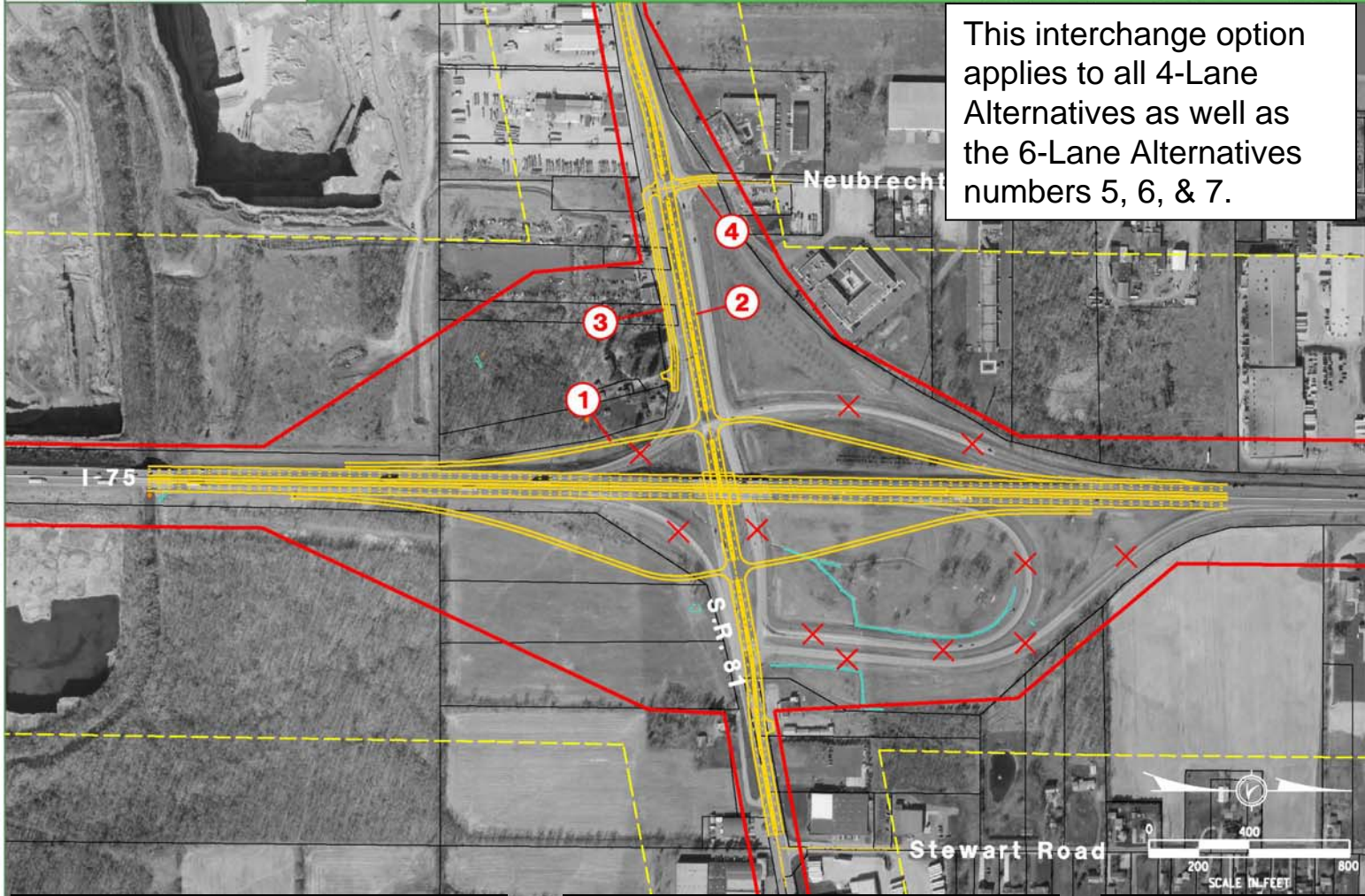


# S.R. 81 Diamond Option



This interchange option applies to all 4-Lane Alternatives as well as the 6-Lane Alternatives numbers 5, 6, & 7.

ALL-75-0.21  
PID 76691  
STAKEHOLDER MEETING  
DECEMBER 19, 2006

- NOTES**
- ① Ramp terminals shifted to avoid properties on southwest corner.
  - ② New 5 lane configuration of S.R. 81 to match conditions at east and west ends. New Roadway shifted to the north by 30 feet to provide room for optional access road at the southwest corner.
  - ③ Optional access road.
  - ④ Realignment of Neubrecht Road to tie in to proposed S.R. 81.

X - Roadway to be removed



Replace existing ramp configuration with a diamond interchange.

Propose new 5 lane configuration of S.R. 81 to match conditions at east and west ends.

Add service road to maintain access and 600 foot limited access R/W requirement.