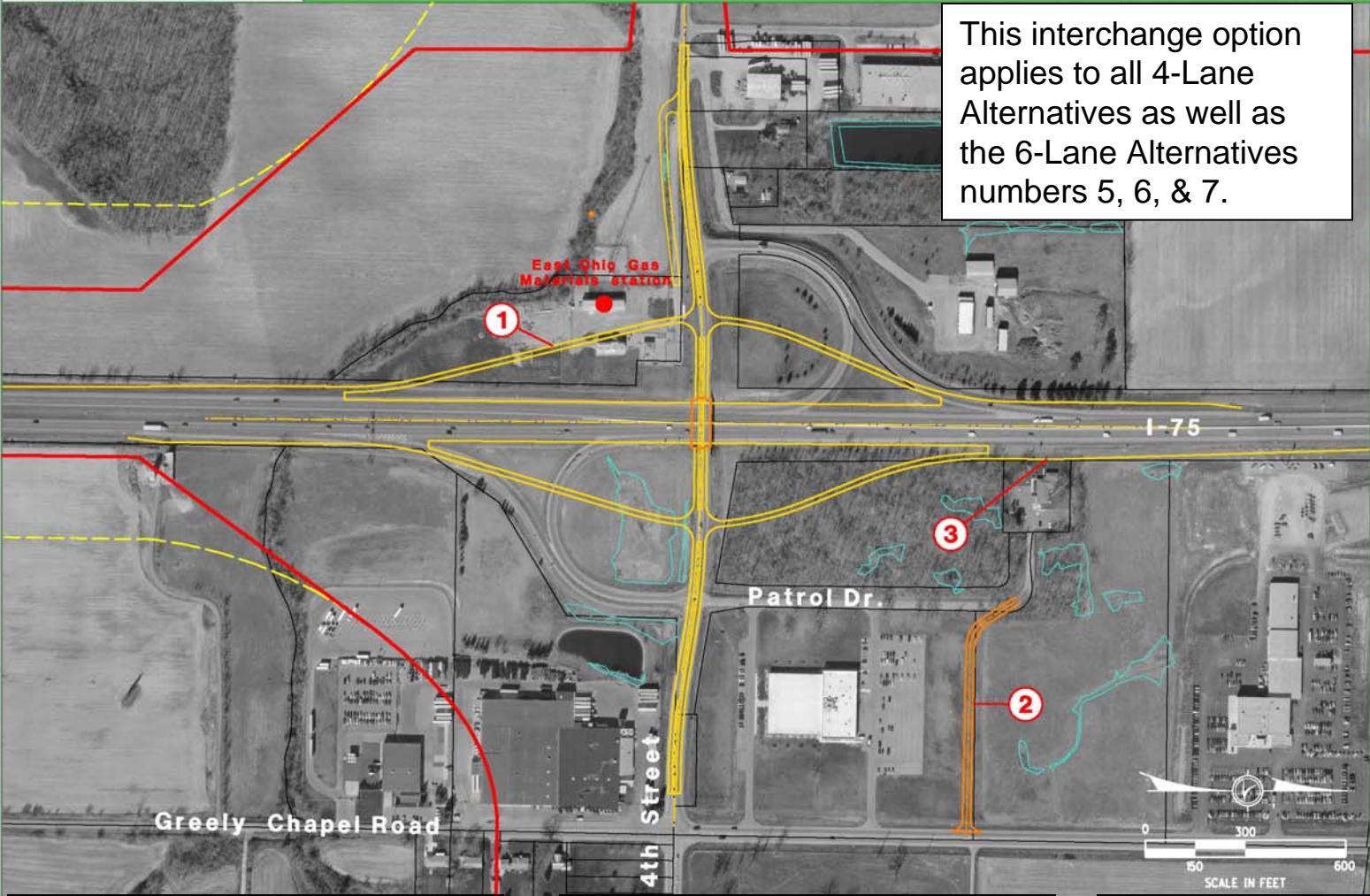


4th Street Diamond Option



This interchange option applies to all 4-Lane Alternatives as well as the 6-Lane Alternatives numbers 5, 6, & 7.

ALL-75-0.21
PID 76691
STAKEHOLDER MEETING
DECEMBER 19, 2006

- NOTES**
- ① Relocation of East Ohio Gas Materials station. Cell tower could remain.
 - ② Relocated Patrol Dr. to Greely Chapel Road due to the 600 foot LA R/W access limit.
 - ③ Edge of pavement of the existing R/W line in front of patrol building. This may require curb and gutter and guardrail.

● - Commercial Displacement



Impact to East Ohio Gas Materials station. Cell tower could remain.

Relocate Patrol Drive to Greely Chapel Road due to the 600 foot limited access access limit.

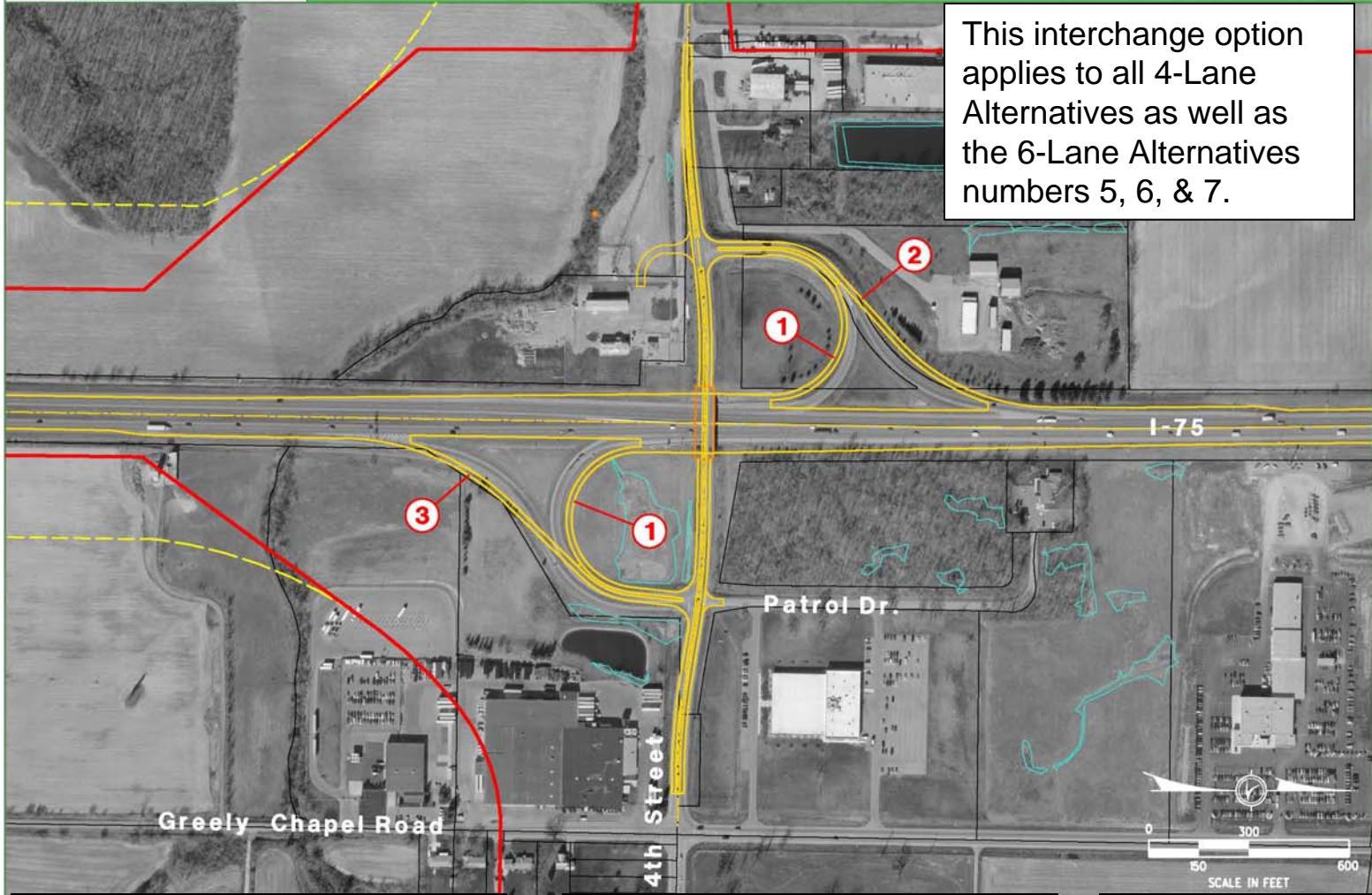
Retaining wall may be required behind patrol facility.

4th Street Existing Upgrade Option

This interchange option applies to all 4-Lane Alternatives as well as the 6-Lane Alternatives numbers 5, 6, & 7.

ALL-75-0.21
PID 76691
STAKEHOLDER MEETING
DECEMBER 19, 2006

- NOTES**
- ① Inside loop ramps have a 25 mph design speed.
 - ② Partial take and possible impacts to driveway to flatten ramp curve.
 - ③ Partial take to flatten ramp curve.



Existing inside loop (entrance) ramps have a 25 mph design speed.

Geometry upgrade (Design Speed) for exit ramps.

Improve 4th Street per traffic analysis.