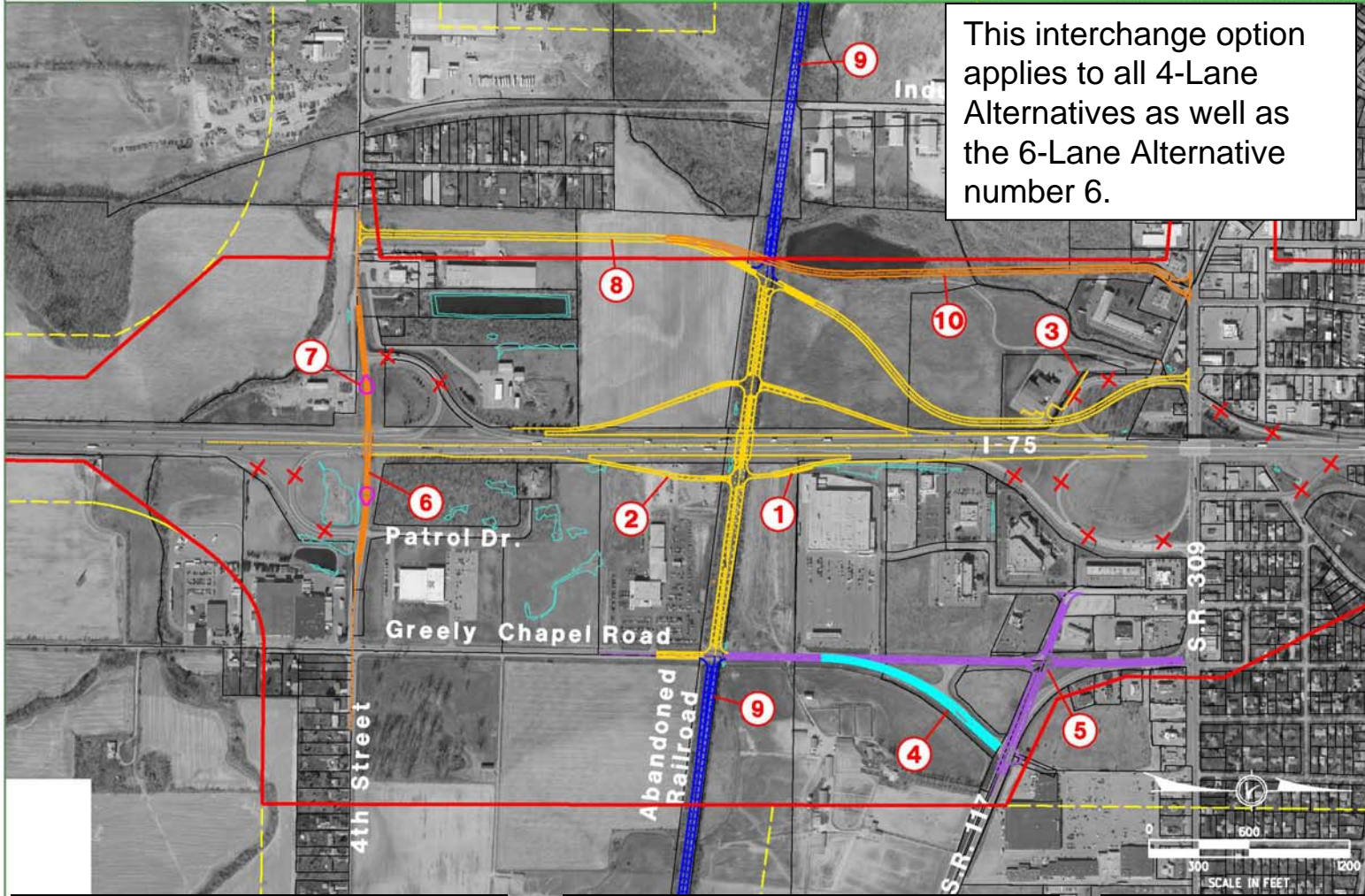


Abandoned Railroad Compressed Diamond Option (interchange centered on existing I-75 alignment)



This interchange option applies to all 4-Lane Alternatives as well as the 6-Lane Alternative number 6.

ALL-75-0.21
PID 76691
STAKEHOLDER MEETING
DECEMBER 19, 2006

- NOTES**
- 1 Impact to Sam's Club would be limited to parking lot and detention pond with the use of a retaining wall.
 - 2 Impact to car dealership parking lot.
 - 3 Possible location for relocated parking lot of Lima UAW Building Corp.
 - 4 Improve existing Greely Chapel Road intersection with S.R. 117 (Option 1).
 - 5 Tie relocated Greely Chapel Road into S.R. 117 with a new intersection to reduce turning movements (Option 2).
 - 6 Optional 4th Street overpass.
 - 7 Optional 4th Street closure using cul-de-sacs.
 - 8 West side connector falls outside the study area (south of the abandoned railroad). The LA R/W limit is 600 feet with this option and may not impact the existing pond.
 - 9 Option to extend new intersecting roadway from existing S.R. 117 along the abandoned railroad over to I-75 and west to S.R. 65.
 - 10 West side connector option would impact the existing pond and connect to a planned existing street extension that intersects with Bellefontaine Ave. at S.R. 309.

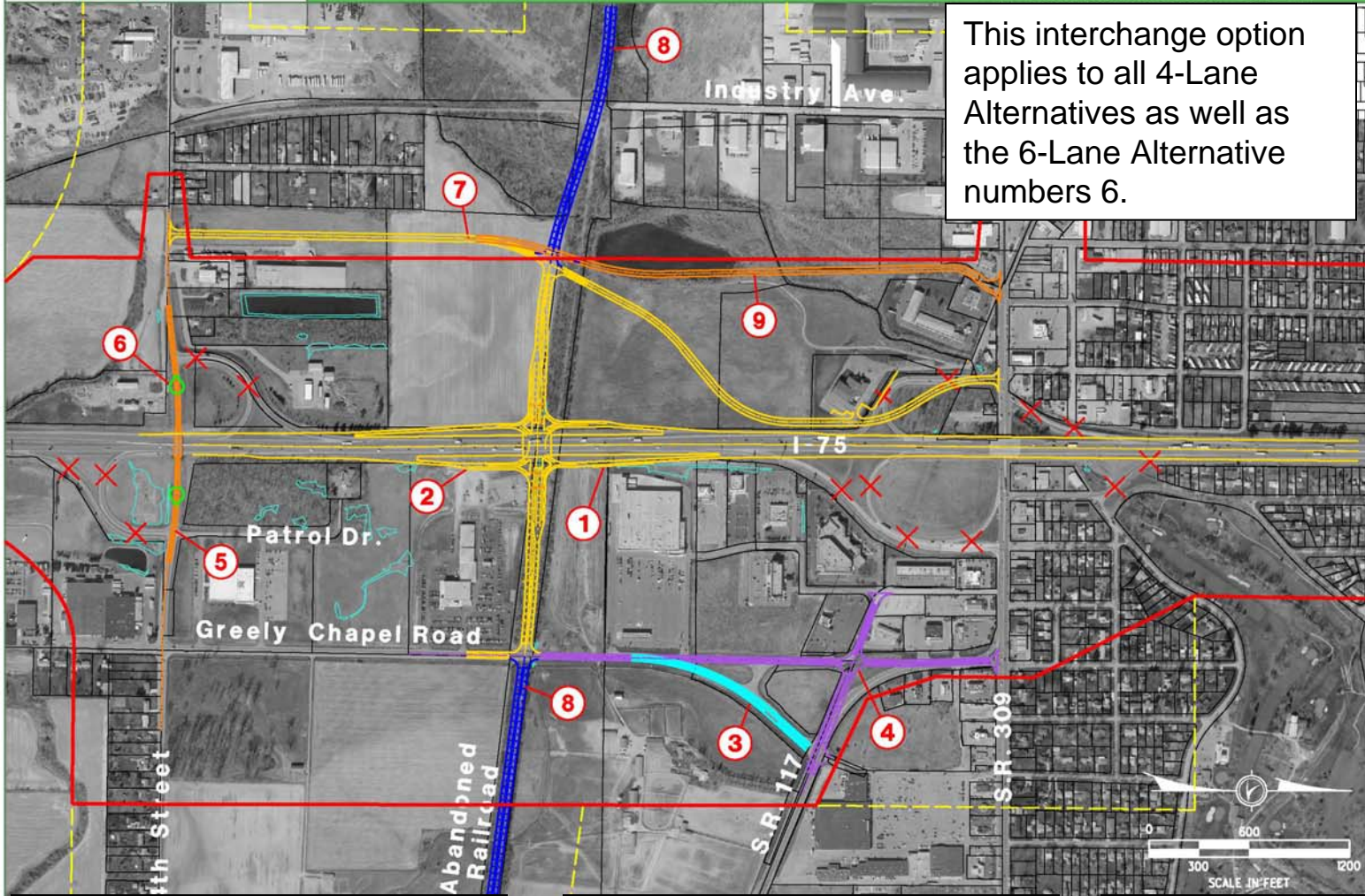
- - Commercial Displacement
- ✗ - Roadway to be removed

Eliminate existing interchanges at 4th Street/I-75 and S.R. 309/I-75 and replace with new diamond interchange at the abandoned railroad.

Impact to Sam's Club & car dealership would be limited to parking lots and detention pond.

New roadway options include extending from S.R. 117 to S.R. 65 or from Greely Chapel Rd. to the westside connector.

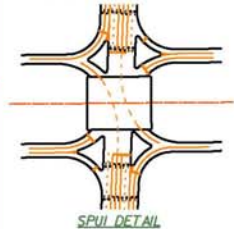
Abandoned R.R. Compressed SPUI Option (interchange centered on existing I-75 alignment)



This interchange option applies to all 4-Lane Alternatives as well as the 6-Lane Alternative numbers 6.

ALL-75-0.21
 PID 76691
 STAKEHOLDER MEETING
 DECEMBER 19, 2006

- NOTES**
- 1 Minimize impact to Sam's Club with proposed wall.
 - 2 Minimal impact to car dealership lot.
 - 3 Improve existing Greely Chapel Road Intersection with S.R. 117 (Option 1).
 - 4 Tie relocated Greely Chapel Road into S.R. 117 with a new intersection to reduce turning movements (Option 2).
 - 5 Optional 4th Street overpass.
 - 6 Optional 4th Street closure using cul-de-sacs.
 - 7 West side connector per alternative.
 - 8 Option to extend new intersecting roadway from existing S.R. 117 along the abandoned railroad over to I-75 and west to S.R. 65.
 - 9 West side connector option would impact the existing pond and connect to a planned existing street extension that intersects with Bellefontaine Ave. at S.R. 309.



● - Commercial Displacement
 X - Roadway to be removed



Eliminate existing interchanges at 4th Street/I-75 and SR 309/I-75 and replace with compressed SPUI at the abandoned railroad.

Impact to Sam's Club & car dealership would be limited to parking lots and detention pond.

New roadway options include extending from S.R. 117 to S.R. 65 or from Greely Chapel Rd. to the westside connector.